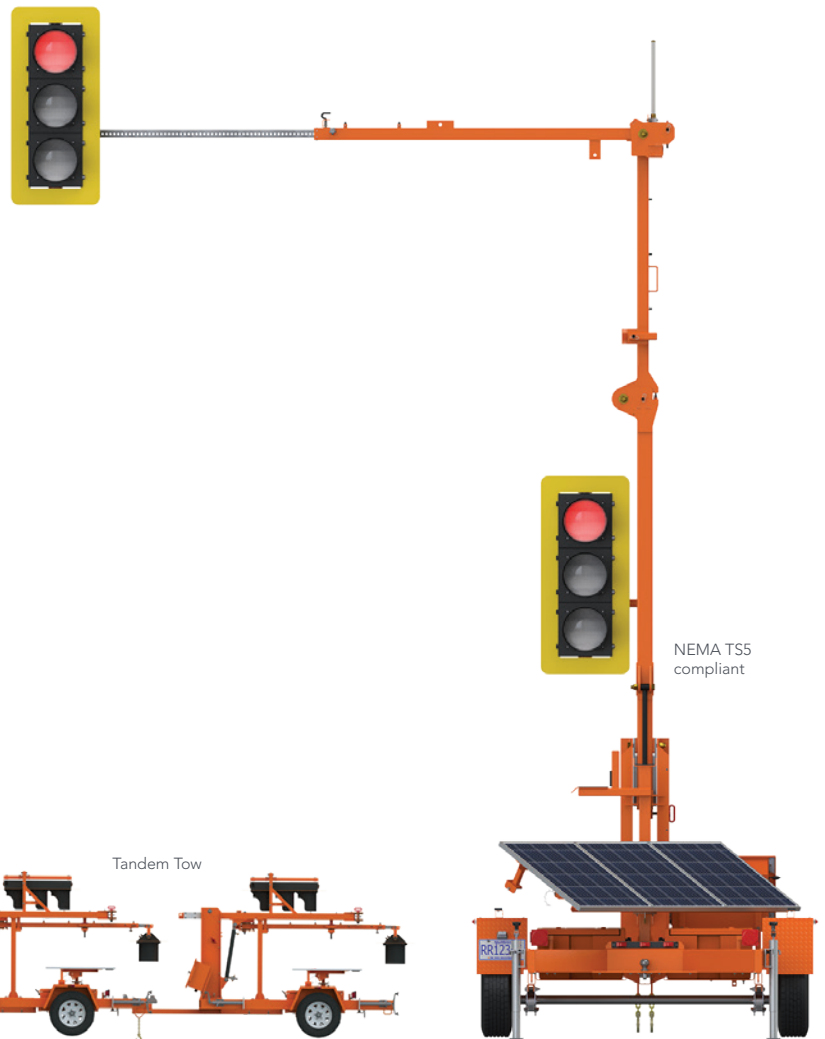


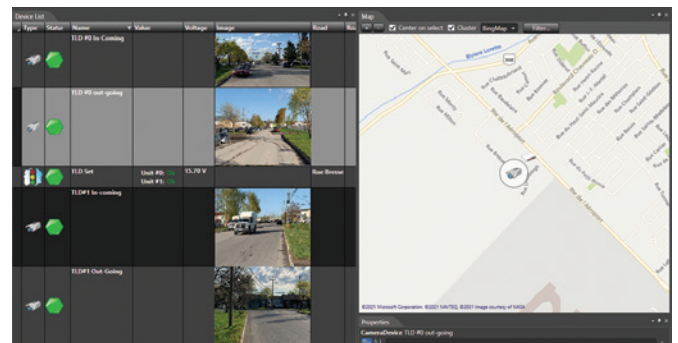
••••• TLD-3612 G3 TRAILER-MOUNTED TRAFFIC SIGNALS

Ver-Mac's TLD-3612 G3 is a battery/solar-powered Nema TS5 compliant portable traffic signal trailer set. This tandem tow trailer set comes with two traffic signal heads on each trailer. The TLD-3612 G3 features include the innovative V-Touch TLD controller, tilt-and-rotate solar panels, hydraulic lift mechanism, advance radio communication and our JamLogic software (optional). The TLD-3612 G3 is the most user friendly traffic control system to set up and program and is the most cost effective in the industry. The TLD-3612 G3 provides for a safe and efficient traffic control solution for a variety of short and long term traffic control applications.



VER-MAC REMOTE MONITORING SYSTEM

- Two Axis P1214-E Fixed Camera per trailer
- Monitor incoming and out going traffic from each trailer
- Confirm work zone is clear before remotely changing system cycle
- Video storage option for incident management



FEATURES & BENEFITS

ANY UNIT CAN BE PRIMARY OR SECONDARY UNIT

No need to move around units

TILT-AND-ROTATE SOLAR PANELS

Maximize solar recharging and increase battery life

JAMLOGIC SOFTWARE

Fleet management with remote monitoring and programming

ADJUSTABLE OVERHEAD MAST

Easy and versatile deployment

HIGHLY VISIBLE 12 IN. (305 MM) LED LAMPS

Meets MUTCD standards

RADIO COMMUNICATION

Secured communication between system units

MALFUNCTION MANAGEMENT SYSTEM

Monitors radio communication, conflict monitoring, signal malfunction and low voltages

MAXIMUM DISTANCE BETWEEN UNITS

Up to 1 mile (1.6 km) line of sight

ABILITY TO CONTROL MULTIPLE UNITS

Versatile to adapt to different project applications

HYDRAULIC LIFT MECHANISM

Makes the deployment of the unit effortless

TANDEM TOW

Save time and money by transporting both units with the same truck

ENVIRONMENTALLY FRIENDLY

No generator noise and pollution

ITE LAMPS

Meets MUTCD standards and provides superior performance, reliability and energy efficiency

MULTIPLE OPTIONS AVAILABLE

Traffic detection, emergency pre-emption and manual flagger to enhance traffic control management

V-TOUCH TLD CONTROLLER

Each TLD-3612 G3 unit features the industry's easiest and quickest programming thanks to the V-Touch TLD controller. The controller systematically walks the user through each step to ensure the proper programming, and sequence is created.

- Large 7 in. (178 mm) LCD color graphic touch screen
- Intuitive point-and-go icons
- Real-time signal display
- Easy pattern selection and configuration
- Traffic pattern plans easy to create, modify and save
- Possibility to schedule plans daily, weekly, monthly
- Instant emergency control (red/red function)
- Ability to send email/SMS alerts when something abnormal occurs (optional)



POWER SUPPLY CONFIGURATION

TILT-AND-ROTATE SOLAR PANELS

Tilts up to 30 degrees and rotates up to 60 degrees to provide maximum charging.

The standard battery/solar configuration is designed to run 12 months in most regions without manual charging

WARRANTY

- 1-year warranty on complete trailers
- 2-year warranty on electronic components manufactured by Ver-Mac

DIMENSIONS AND WEIGHTS

- Operating length: 182 in. (4616 mm)
- Operating width: 205 in. (5202 mm)
- Operating height: 265 in. (6718 mm)
- Traveling length: 182 in. (4616 mm)
- Traveling width: 88 in. (2238 mm)
- Traveling height: 98 in. (2477 mm)
- Weight (approx.): 1460 kg (3,219 lb.)
- Axle/suspension: 2495 kg (5,500 lb.)
- Brake actuator: 3402 kg (7,500 lb.)

OPTIONS

- Traffic detection
 - Wireless remote
 - Countdown display
 - Additional units
 - Advanced warning system
 - Emergency pre-emption
- Other options are available to meet your needs.

